

Russell-Cotes Quiz: Round Seven

1. Where was Annie born?

Answer: Glasgow, Scotland

2. Before he married, in which country did Merton teach for a short time?

Answer: Argentina

3. Which two countries are symbolised on the wall paper in the Study?

Answer: England and Scotland

4. Where did Annie burn her leg on a lava field?

Answer: Hawaii, The Lava Fields of Kilauea

5. Where did Annie and Merton visit a gold mine and have their photograph taken with Merton dressed up as a gold miner?

Answer: Ballarat, Australia

6. The decoration in the Moorish Alcove was based on which Spanish Palace?

Answer: Alhambra Palace, Granada, Spain

7. Apart from England and Scotland, which countries are represented in the stained glass windows in the Dining Room?

Answer: Ireland, Wales, Australia, Gibraltar, Malta, Ceylon (Sri Lanka) & Cape of Good Hope

8. In the collection there are a pair of hotel slippers that Annie brought back from her travels, which country are they from?

Answer: Japan

9. In his autobiography Merton describes a train journey where the heat was so intense they had to resort to soaking their handkerchiefs in eau de Cologne and putting them on their heads. Which country were they in?

Answer: India

10. The Main Hall ceiling is decorated with mon, which country do they originate from?

Answer: Japan

11. Where is the canoe from?



Answer: New Zealand

12. Where is this beautiful quivering hair ornament from?



Answer: China

13. From which Islands do we believe this Melanesian mask is from?



Answer: Papa New Guinea

14. Where is this tea pot from?



Answer: Tibet

15. In which country is 'Good News, Bad News' set?



Answer: Portugal

16. Who are these sleeping children and where is the viewer meant to envisage them?



Answer: The Princes in the Tower (Edward V & Richard Duke of York)

The Tower of London

17. Annie and Merton took cuttings from a weeping willow overhanging Napoleon's grave. Where were they?

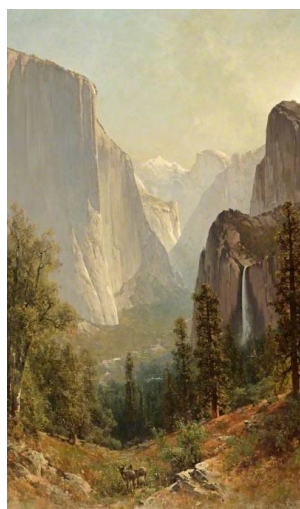
Answer: Saint Helena

20. This crocodile headed lyre is from which continent?



Answer: Africa

18. Which American National Park is this?



Answer: Yosemite

19. Which town is shown in this painting from 1861?



Answer: Bournemouth